

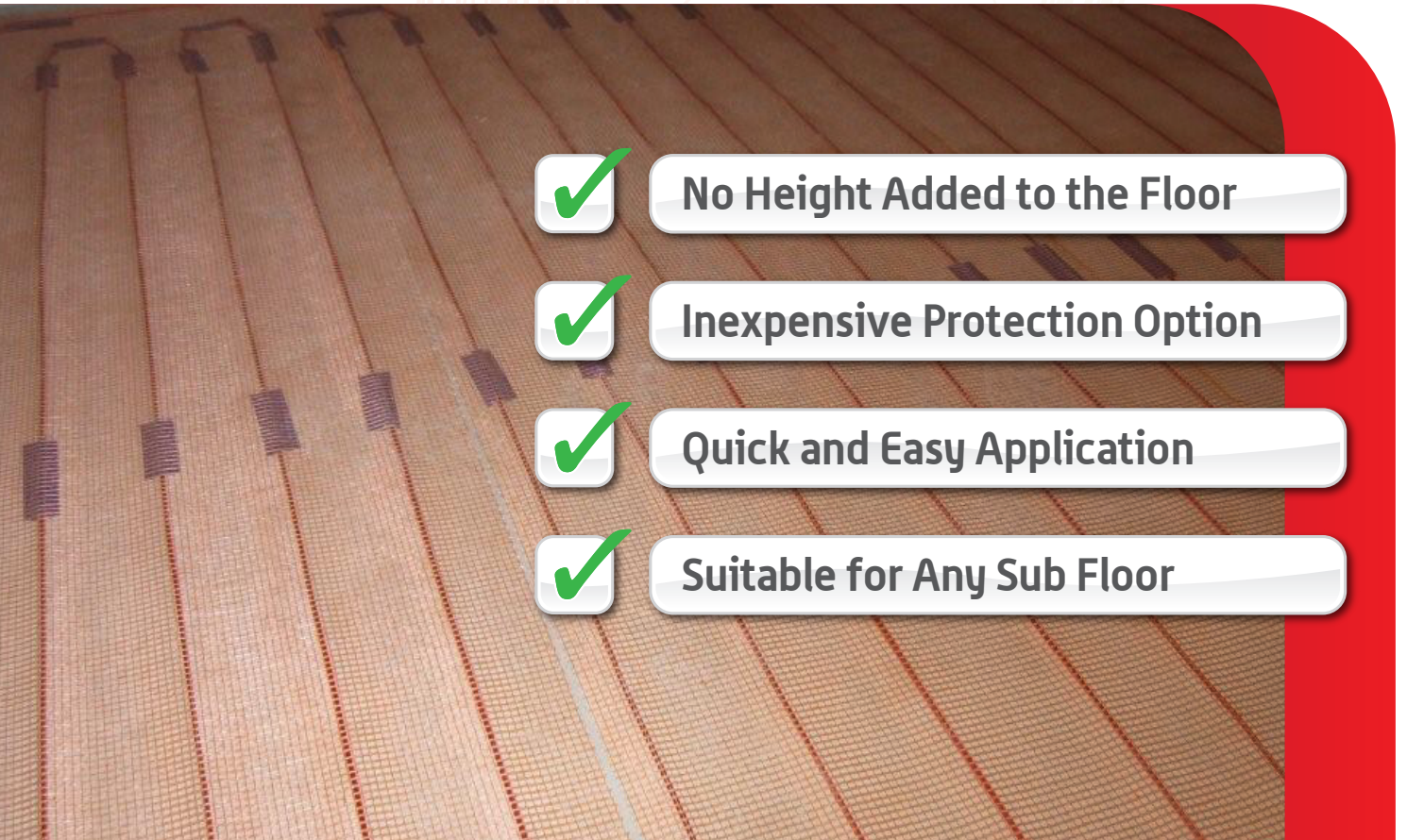
BEST  
VALUE OPTION



Installer Friendly

# cable protection self adhesive mesh

faster, cheaper, easier underfloor heating installation



No Height Added to the Floor



Inexpensive Protection Option



Quick and Easy Application



Suitable for Any Sub Floor

## Cable Guard Mesh

Underfloor Heating Cable Protection, Made Easy and Cost Efficient

Provides Shear Protection ● Improves Running Efficiency ● Faster Installations

# tile heating cable protection

## application instructions and technical information

Taking only minutes to install, there is no need for floor levelling compounds, construction adhesives or additional cable fixing tape. Tilers can work directly on the original subfloor straight away – perfect for urgent installations, renovation projects or where minimal floor height is essential. Cable Guard Mesh costs only a fraction of other cable protection options making the luxury of underfloor heating even more affordable.

### Step 1.

Mix and apply a sealant/primer as per manufacturer's instructions. Use a soft broom to spread the sealant evenly. Ensure complete coverage. Allow the sealant to dry until the fixing tape can adhere satisfactorily to the subfloor.

### Step 2.

Fix the heating element to the subfloor as per the cable installation instructions.

### Step 3.

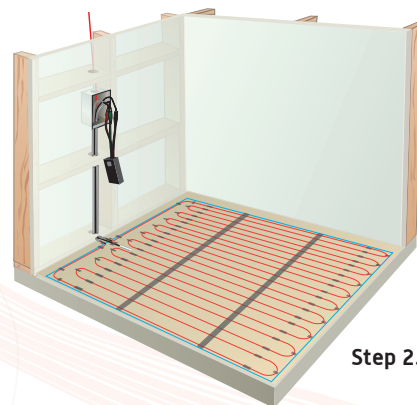
Roll out the Cable Guard Mesh then use a utility knife to cut the mesh to suit the room's layout. Ensure the mesh overlaps by approximately 10mm at joints to ensure the cable is protected.

### Step 4.

Sweep or roll the mesh in the same directions as the run of the mesh to maximise the contact of the mesh to the subfloor.

### Step 5.

Tile as usual. The floor covering professional must take care when working over the heating cable. Do not rest heavy objects directly on the cables and avoid all unnecessary foot traffic.




Step 2.




Step 3.



Step 5.

 The Cable Guard Mesh is only suitable for under tile and marble installations. The installation of underfloor heating under any other floor covering requires the application of a suitable levelling compound. \*Matrix showing floor coverings and protection options

	FIBREGLASS MESH	LEVELING
Screed Bed	Optional	
Tile, Stone & Slate		Optional
Carpet, Vinyl & Timber		Required (4mm)

 Concrete subfloors must be completely cured as per the manufacturer's specifications. Ensure that the floor is clean and dry before installation. The subfloor must be rigid and capable of carrying the weight of the floor coverings and contents of the room without any movement. Otherwise first install a fibre cement underlay.

### Technical Specifications

- Alkaline Resistant Coating
- Rolls cover up to 12.5m<sup>2</sup>  
(25m x 0.5m)
- AS4992.2-2006/2  
Pull-off Test Reports Available on Request

#### Australia

PO Box 3929  
Robina Town Centre  
Queensland 4230  
T: 1800 833 933  
F: 1800 133 134  
E: info@livella.com

#### New Zealand

PO Box 35812  
Browns Bay  
North Shore City 0753  
T: 0800 432 892  
F: 0800 443 289  
E: nz@livella.com



www.livella.com